



Client

London Borough of Greenwich and Hadlow College

Site

Shooters Hill, Greenwich

Role

Architecture and Town Planning

Value

Confidential

Project

New Build Equestrian Centre

OVERVIEW

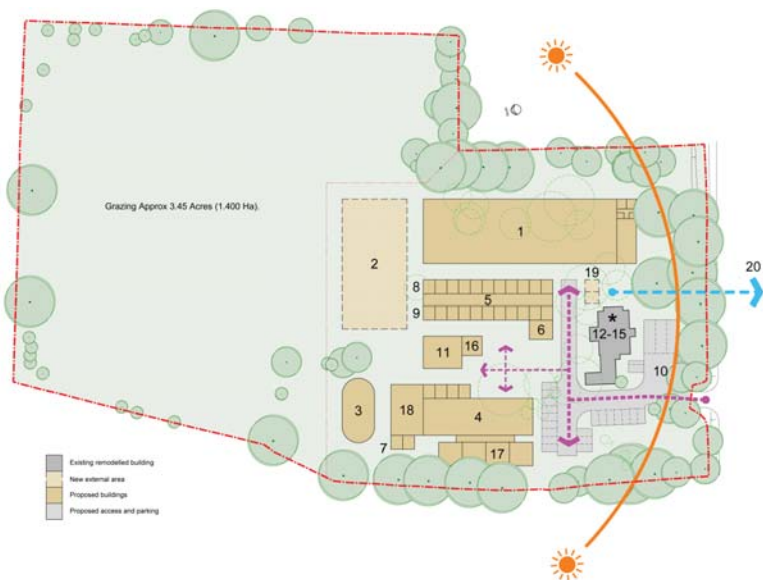
On behalf of the London Borough of Greenwich and Hadlow College, Pellings have obtained planning permission for an Equestrian Centre on a sensitive 2.5 hectare site designated as Metropolitan Open Lane on Shooters Hill Road.

The Equestrian Centre will be an Olympic legacy project and includes a 1200m² indoor arena, stables, a horse therapy and treatment centre, classrooms / lecture rooms and ancillary out buildings and car parking facilities.

A key aim of the project is to increase opportunities for, and access to, equestrian activity amongst the local community, particularly target groups such as deprived social groups, children and disabled people.

The application was accompanied by an Environmental Impact Assessment and was referable to the Greater London Authority.

The project will achieve a lasting legacy from the Games, benefiting residents from all backgrounds and across a number of areas including employment, health, training and social inclusion.



EQUESTRIAN CENTRE

